

# Non-Mydriatic Retinal Camera **TRC-NW8**



Perfection for  
the Professionals...

# TRC-NW8

Topcon prides itself on being the leading ophthalmic camera manufacturer in the world and has been producing cameras since 1965. With this wealth of experience it comes as no surprise that when looking to produce a successor to the very popular TRC-NW6S, probably the most sold non mydriatic camera in the world, Topcon used it's vast experience in Optical/Mechanical & Software engineering to come up with a camera that would be far ahead of the competition in terms of useful functionality and would allow for consistently good quality of imaging while at the same time allowing for quicker capture. TRC-NW8 we feel will become the professional's first choice of non-mydriatic Fundus cameras.

Topcon....producers of professional equipment  
for the Professional.





# High Quality Image

## ☐ True Optical Red Free Photography

Topcon has developed an innovative feature on its TRC-NW8: True optical red free capability with an actual red free filter. This feature allows for high resolution red-free image acquisition that is clearer than digitally enhanced images from colour-only imaging systems. As shown in the picture the red free and colour image capabilities are selectable by pulling out the RF filter.



Pull in/out the RF filter selector



**Pull out:** True Red Free image(B&W) as taken on the TRC-NW8



**Pull in:** Colour image

## ☐ Auto Small Pupil Detection

A common problem are patients with small pupils and when mydriatic drops cannot be used the "Small Pupil" (min. Ø3.3mm) option within the TRC-NW8 allows you to still be able to get a shot.



Image with the small pupil mode

## ☐ Quality of image is crucial as well as durability

With these important requirements Topcon did not hesitate in deciding on which manufacturer it would use for its digital camera supplier.

Nikon probably has the largest reputation when it comes to digital SLR cameras and is used by most of the worlds press for very good reason. Therefore you have no need to worry that your new TRC-NW8 will ever be compromised by the digital SLR in terms of quality of image or durability.

## ☐ Lower Flash Intensity

Topcon has always endeavoured to keep flash levels as low as possible while at the same time ensuring that good exposed images are achieved. The TRC-NW8 is no exception here, but with greater control of the CCD camera, optimum exposure can be achieved each and every time.

## ☐ Aesthetic Design

In designing the new TRC-NW8 a lot of attention has been spent on the general appearance of the unit with the finest finish and also on the ergonomics. What is clear when you sit down at the camera is how logical everything is and not cluttered by many different cables. The TRC-NW8 has a unique way of eliminating connecting cables and gives the operator a clutter free environment.

## ☐ Fixation Target

In line with the requirement for Diabetic screening, when the fixation target mode is set at DCF ("D" is for centre of optic disc, "C" is for central macula and "F" is for centre of Fovea), the internal fixation target will move one by one in proper position that can be helpful in diagnosis such as glaucoma and diabetes. The setting will change in the following order.

\* Please note that the following images are healthy eyes.



Optic Disc "D"



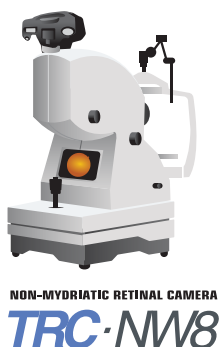
Central Macula "C"



Fovea "F"

## For more professional, Topcon provides advanced solutions for image acquisition.

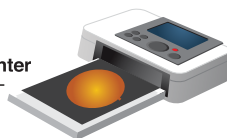
Topcon has for many decades been at the forefront of providing software solutions to maximize the efficiency of its cameras and today offer the professional a suite of the most modern and easy to use software options, aimed at improving efficiency.



Computer



Printer



### ☐ IMAGEnet

Using comprehensive software for capturing, processing, archiving and consulting, IMAGEnet system expands the abilities of the TRC-NW8 into a digital imaging analysis system for clinical applications.

#### • NW8 Capture

"NW8 capture" as a convenient module included in IMAGEnet is particularly easy, making it possible to control the following settings with operation of combo box.

### ☐ Direct Print Out

The new TRC-NW8 camera has the adding ability of being able to print directly to a digital printer (applicable for PictBridge) and therefore does not need a separate PC. This facility is extremely useful where portability is a high priority.

# So simple to use!

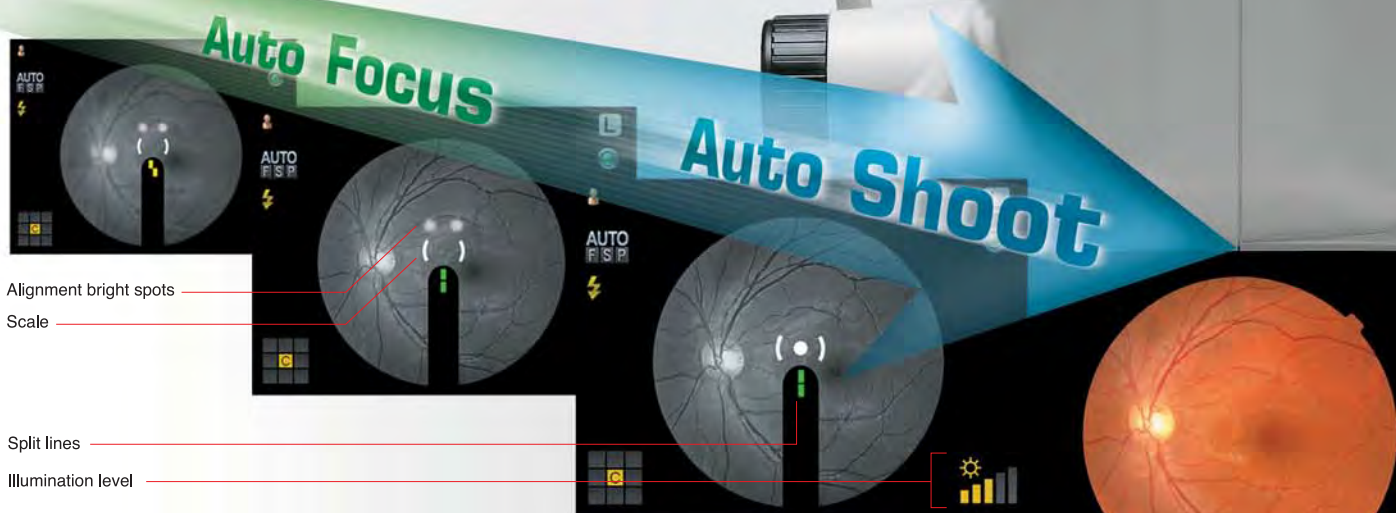
With clinics getting busier these days it was seen as crucial that the new TRC-NW8 should be the easiest camera to use in order to obtain the best possible results time after time.

To facilitate this new TRC-NW8 incorporates some ground breaking technology to aid the photographer.

## ☐ Easy alignment, Auto Focus and Auto shoot

Alignment could not be simpler with the new TRC-NW8.

Crucially the operator is still in control; however with the very latest in alignment aids the process of getting a sharp focussed image time after time could not be easier.



**Auto Focus** This is a new feature of the TRC-NW8 which allows the operator to choose to have Auto Focus facility. This can be of great help when trying to photograph difficult subjects or patients with high degree of accommodation. Auto Focus allows for a sharp image every time.

**Auto Shoot** The TRC-NW8 has the option for Auto Shoot which is of great benefit to the operator as it monitors when all parameters are correct and takes the picture. This rapidly speeds up capture process and is of great benefit when photographing patients who have problems fixating.



Specifications

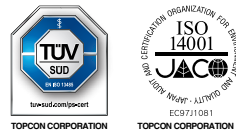
Angle of coverage	45°
Working distance	40.7mm
Pupil diameter for photography	4.0mm or more 3.3mm or more when the small pupil diaphragm is used
Type of photography	Colour photography and red-free photography
Patient diopter correction range	Without correction lens: -13D to +12D (where split lines are used) With minus correction lens: -12D to -33D With plus correction lens: +9D to +40D
Auxiliary function for photography	Auto focus function (Used only in the split line working range. This can be turned ON/OFF.)
Internal Fixation Target	Center/Periphery Right/left eye automatic detection Optional position presetting function
Base movement	Back-forth:46mm, Right-left:100mm, Up-down:30mm
Chinrest movement	67mm
Power source	Frequency:50/60Hz Voltage:AC110,120,230,240V selectable
Weight	24.5kg
Dimensions	272(W) X 505(D) X 530(H)mm
Power consumptions	400VA(Maximum),100VA(Normal)

Non-Mydriatic Retinal Camera  
TRC-NW8



**Topcon Healthcare, Inc.**  
111 Bauer Drive, Oakland, NJ 07436, U.S.A.  
Phone: +1-201-599-5100  
www.topconhealthcare.com

**IMPORTANT** In order to obtain the best results with this instrument, please be sure to review all user instructions prior to operation.  
Not all products, services, or offers are available in all markets. Contact your local distributor for country-specific information and availability.



**TOPCON CORPORATION**  
75-1 Hasunuma-cho, Itabashi-ku, Tokyo 174-8580, JAPAN.  
Phone: +81-(0)3-3558-2522/2502  
Fax: +81-(0)3-3965-6898  
www.topconhealthcare.jp

